

# UAC-2 MixEfx

## Reference guide

## Introduction

**UAC-2 MixEfx** is a mix application designed specifically for the **ZOOM UAC-2**. Using a computer, you can make settings for the built-in mixer and for the high-quality monitoring effects. In addition to LO CUT and PHASE reversal functions, other functions include LOOPBACK, which sends the input signal and computer signal back to the computer, and MEMORY, which allows you to save settings with one touch.

## Installing and launching UAC-2 MixEfx

### 1. Download UAC-2 MixEfx to the computer

Download the application from the ZOOM website (<http://www.zoom.co.jp/downloads>).

#### HINT

- You can download the latest ZOOM **UAC-2 MixEfx** from the above website.
- Download **UAC-2 MixEfx** for the operating system that you are using.

### 2. Install UAC-2 MixEfx on the computer

Follow the instructions that appear on screen to install **UAC-2 MixEfx**.

### 3. Launch UAC-2 MixEfx

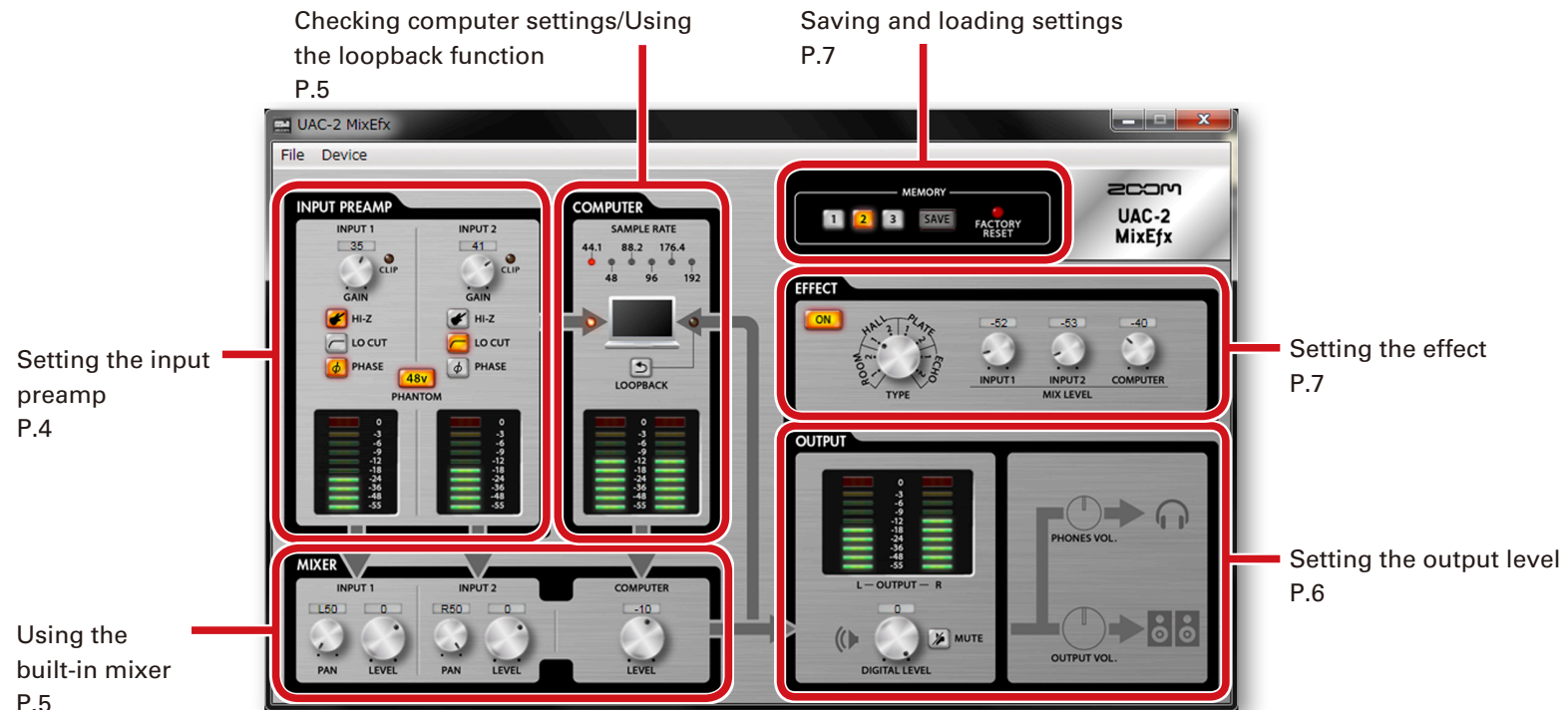


When you connect a **UAC-2** to a computer using a USB cable, **UAC-2 MixEfx** will launch automatically.

#### HINT

- See the **UAC-2** operation manual for instructions about connecting it with a computer.
- If it does not launch automatically, launch **UAC-2 MixEfx** manually from where it is installed on the computer.

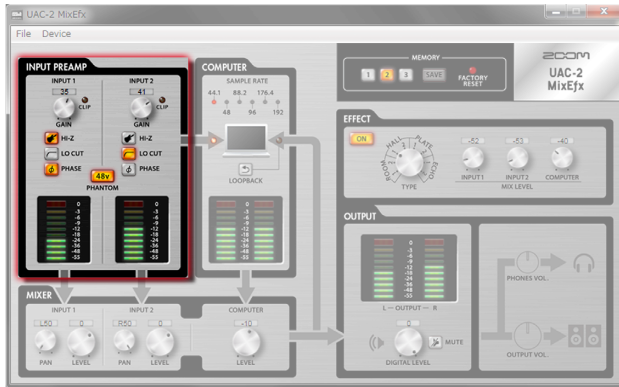
# Overview of sections/Basic operations



## Basic operations

- Click a knob and drag up or down to adjust it.
- Press the shift key while moving a knob to make fine adjustments.
- Click a knob value to allow direct entry of the value.
- Click a button to turn it on/off.
- Follow the procedures below to set the sampling rate.  
Open the Control Panel, then "Hardware and Sound" and change it on the ZOOM UAC-2 Control Panel.

# Setting the input preamp (INPUT PREAMP)



## Adjusting the input gain

Turn the GAIN knob to adjust the input gain so that it does not cause the CLIP indicator to light.

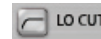
### NOTE

- If you adjust the **UAC-2 GAIN** knob, the **UAC-2 MixEfx** input gain setting will also change automatically.



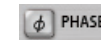
## Using the Hi-Z function

Click the Hi-Z button so that it lights.



## Enabling the lo-cut filter

Click the LO CUT button so that it lights.  
The cutoff frequency is 80 Hz.



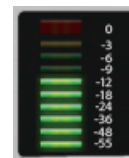
## Reversing the polarity

Click the PHASE button so that it lights.



## Using phantom power

Click the PHANTOM button so that it lights.  
Phantom power will be supplied to both INPUT 1 and INPUT 2 simultaneously.

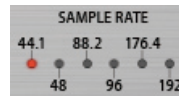
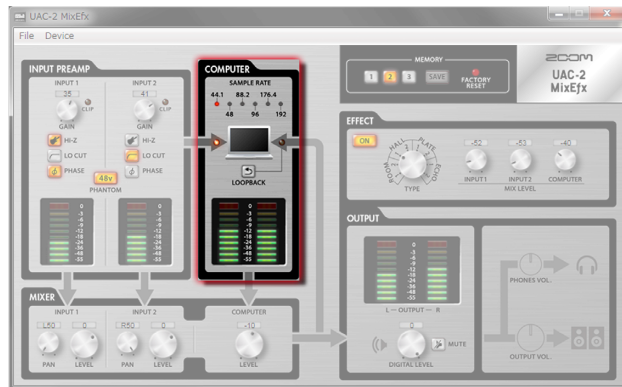


## Checking input levels

Check the level meters to see the input levels of INPUT 1 and INPUT 2.

If an input exceeds 0 dB (maximum value), the top of the meter will light red. Click the top of the meter to turn off this indicator.

# Checking computer settings/Using the loopback function (COMPUTER)



## Checking the sampling rate

Checking the sampling rate.

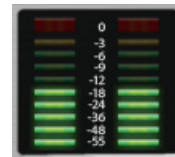
The lit indicator shows the sampling rate that the **UAC-2** is using.



## Sending the mixed signal to the computer

The signals input through INPUT 1 and INPUT 2 and from the computer can be mixed and sent back to the computer.

When you want to record the final mixed signal, press the LOOPBACK button so that it lights.



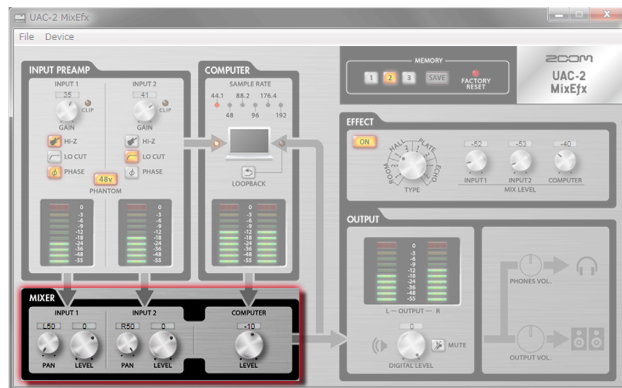
## Checking input levels from the computer

Check the level meters to see the input levels from the computer.

If an input exceeds 0 dB (maximum value), the top of the meter will light red.

Click the top of the meter to turn off this indicator.

# Using the built-in mixer (MIXER)



## Adjusting the input signal panning

Turn the INPUT 1 PAN and INPUT 2 PAN knobs to adjust the panning of the input signals.

Double-click to set it to 0 (center).

In the center position, the reduction is -3 dB.



## Adjusting the input signal levels

Turn the INPUT 1 LEVEL and INPUT 2 LEVEL knobs to adjust the levels of the input signals.

Double-click to set it to 0 dB.



## Adjusting signal levels input from the computer

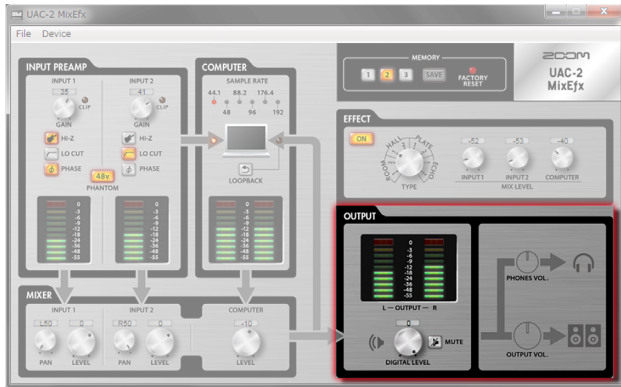
Turn the COMPUTER LEVEL knob to adjust the computer input levels.

Double-click to set it to 0 dB.

### NOTE

- If the **UAC-2 DIRECT MONITOR** switch position is changed, the **UAC-2 MixEfx** pan and input level settings will also change automatically.

# Setting the output level (OUTPUT)



## NOTE

- **UAC-2 MixEfx** cannot be used to adjust the **OUTPUT** and **PHONES** levels. Use the **UAC-2 OUTPUT** and **PHONES** knobs to adjust these levels.



## Adjusting the DIGITAL LEVEL

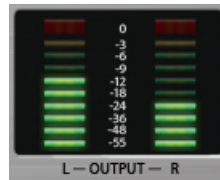
Turn the DIGITAL LEVEL knob to adjust it.



## Muting the DIGITAL LEVEL output

You can mute the DIGITAL LEVEL output.

Click the MUTE button so that it lights to mute the output.



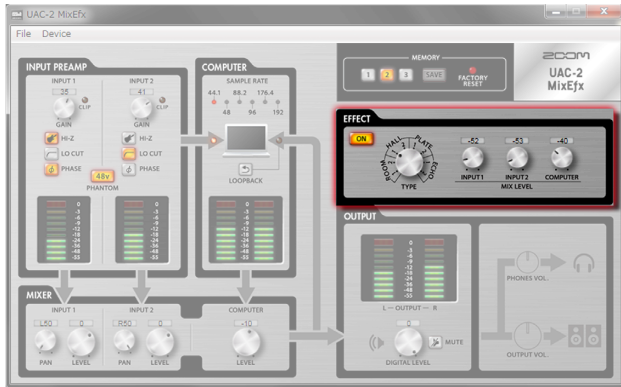
## Checking output levels

You can check the output level with the level meters.

If an output exceeds 0 dB (maximum value), the top of the meter will light red.

Click the top of the meter to turn off this indicator.

# Setting the effect (EFFECT)



## Adjusting effect settings

1. Turn the effect on.

Click



2. Select the effect.

Turn



3. Adjust the effect MIX LEVEL.

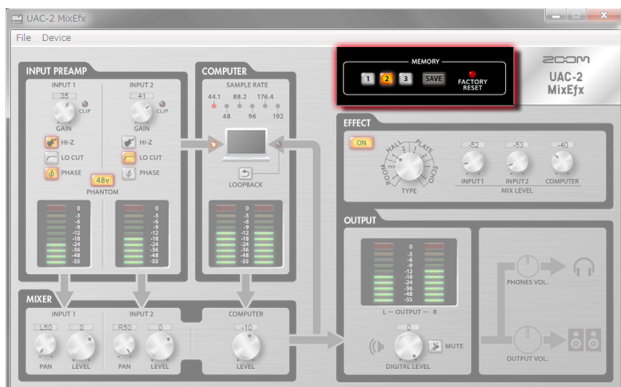
Turn



## Effect types

ROOM1	This reverb simulates the reverberations of an echo chamber in a recording studio.
ROOM2	This reverb simulates the reverberations of a concert in a club.
HALL1	This reverb simulates a concert hall with bright reverberations.
HALL2	This reverb simulates a concert hall with muted reverberations.
PLATE1	This simulates a plate reverb with short reflections.
PLATE2	This simulates a plate reverb with long reflections.
ECHO1	This short delay can be used in many situations.
ECHO2	This simulates a tape echo.

# Saving and loading settings (MEMORY)



## Saving settings

1. Start saving settings.

Click



2. Select a blinking button and save the settings.

Click



## Loading settings

1. Load saved settings.

Click



## Resetting interface settings

To restore a **UAC-2** to its factory default settings, click the **FACTORY RESET** button. Settings saved in **UAC-2 MixEfx** will be retained.

# Managing software and firmware versions

## ■ Viewing version information

1. Click "File" in the **UAC-2 MixEfx** tool bar.



2. Select "About UAC-2 MixEfx".



3. Check the version information.



### HINT

- "Version" is the **UAC-2 MixEfx** mixer application version and "Device Version" is the version of the **UAC-2** hardware.

## ■ Setting version update alerts

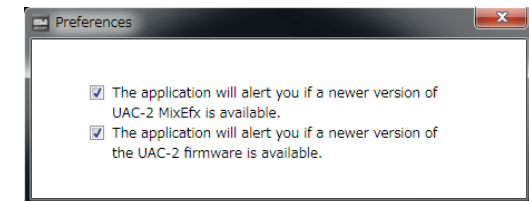
1. Click "File" in the **UAC-2 MixEfx** tool bar.



2. Select "Preferences".



3. Enable the version update alerts.



### HINT

- The alerts are enabled when checked.

• Windows® is a registered trademark of Microsoft® Corporation.

Note: All trademarks and registered trademarks in this document are for identification purposes only and are not intended to infringe on the copyrights of their respective owners.

**ZOOM**

**ZOOM CORPORATION**

4-4-3 Kanda-Surugadai, Chiyoda-ku, Tokyo 101-0062 Japan <http://www.zoom.co.jp>

Z21-2330-01