



## INSTALLATION AND OPERATION MANUAL

### EZ-MCP1 Microphone Compressor

Model numbers:  
EZ-MCP1 includes power supply with North American plug  
EZ-MCP1X includes worldwide power supply (specify plug)



RDL EZ Series products provide the highest level of value to A/V professionals and A/V users who demand professional quality. For long-term performance, quality and value, you have made the EZ choice. EZ products are made in the USA by RDL, the inventor of application-specific modules bringing decades of experience as the world's leading manufacturer of high-reliability performance products to the A/V industry. Visit the RDL website for hundreds of professional A/V products made in the USA by RDL.



[www.rdlnet.com](http://www.rdlnet.com)

**Decades of Performance, Quality and Value**

---

RDL • 659 6th Street • Prescott, AZ • USA 86301 • Sales: 800-281-2683 • 928-443-9391  
Tech Support: 800-933-1780 • 928-778-3554 • RDL Europe Sales & Support: (31) 20-6238-983

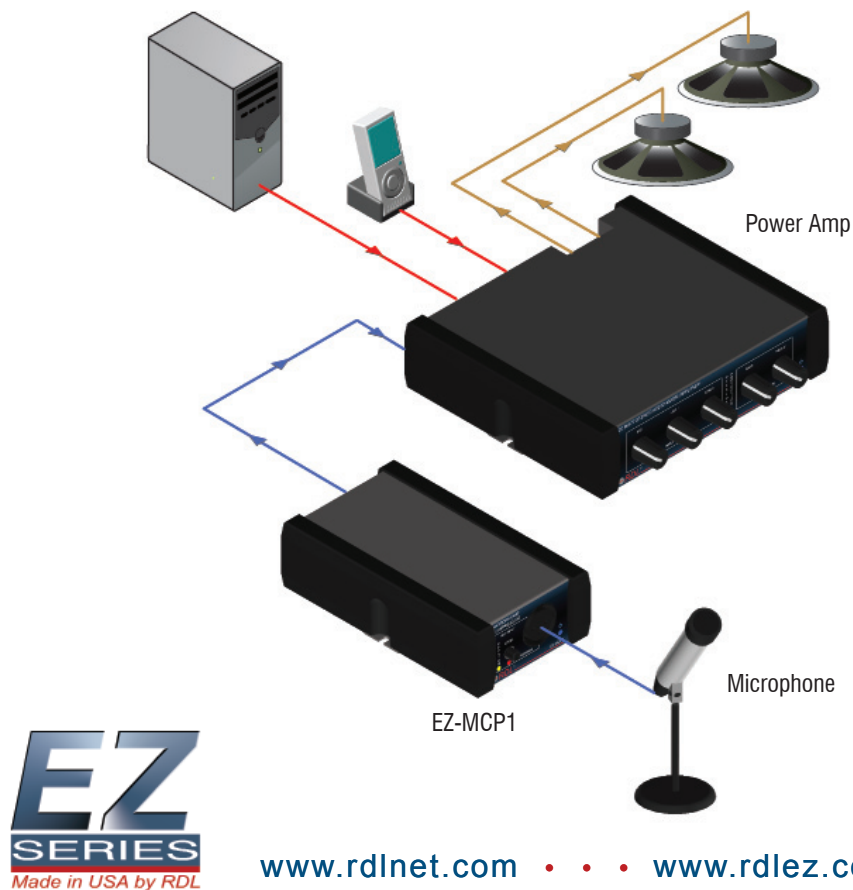
# EZ-MCP1

## Microphone Compressor

- Produces Consistent Levels from Any Microphone
- Installs Between Microphone and Mixer/Amplifier
- Improves Intelligibility with Fast Automatic Level Control
- Controls Overloads that Cause Distortion and Clipping
- Front-Panel Set-Up Trimmer with LED Indicator
- Automatic Phantom Voltage Switching with LED
- XLR Input and Output

The EZ-MCP1 is an in-line microphone compressor that produces consistent audio levels despite wide variations (up to 30 dB) from the microphone. It is installed between a dynamic or condenser microphone and a mic-level mixer or amplifier input. The only setup required is a front-panel level trimmer that is adjusted during normal speech until the compression LED just begins to flash. A rear-panel output level trimmer is provided although it is typically left in the normal default position. Phantom voltage (24 V) is automatically switched on when the EZ-MCP1 output is connected to a mic jack that provides phantom voltage. The EZ-MCP1 improves sound quality and intelligibility by producing consistent audio levels and controlling overloads that produce distortion and clipping. It is used for recording, paging and public address in houses of worship, restaurants, clubs, meeting rooms, educational facilities, conference rooms and commercial sound systems.

## TYPICAL APPLICATION



**MIC INPUT**

Plug a microphone into the jack. The microphone may be either a standard dynamic or a condenser microphone.

**LEVEL ADJUSTMENT**

Speak into the microphone at the *lowest* normal speech level. Adjust the LEVEL control until the COMPRESSION LED just begins to flash.

**POWER INDICATOR**

Glow blue when the product is connected to a valid power source.

**PHANTOM**

The PHANTOM LED glows when 24 V phantom is being provided to the microphone connected to the MIC INPUT. (Phantom is automatically turned on when the MIC OUTPUT is connected to other equipment that provides phantom voltage.

**24 VDC POWER INPUT**

Insert plug from power supply. Rotate 1/4 turn clockwise to lock.

**MIC OUTPUT**

Connect to the microphone input of other equipment, typically a mixer or amplifier.

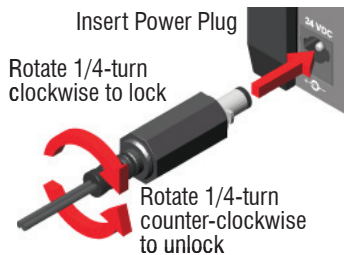
**OUTPUT LEVEL**

Set to the NORMAL position. Increase or decrease the level only if necessary.

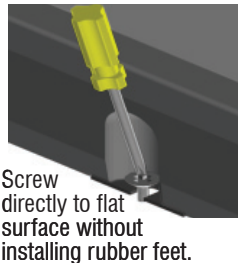
Maximum overload protection is achieved if the OUTPUT LEVEL control is set to NORMAL and the proper system mic level is adjusted on the system mixer or amplifier. The OUTPUT LEVEL adjustment is normally used if access to the system mixer or amplifier is unavailable. Note: The mic input of the system mixer or amplifier *may* overload if the OUTPUT LEVEL is turned up too high.



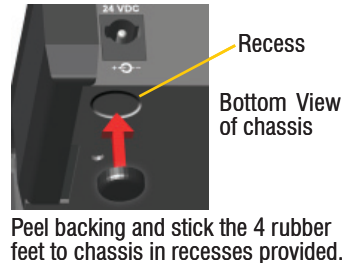
**POWER CONNECTION**



**FIXED MOUNTING**



**RUBBER FEET ATTACHMENT**



## SELECTED MOUNTING ACCESSORIES Complete accessory listing available at: [rdlez.com](http://rdlez.com)

### EZ-RA6

Rack Adapter for 6 Increments of 1/6 Rack Width



### EZ-CC6

Component Chassis for 6 Increments of 1/6 Rack Width



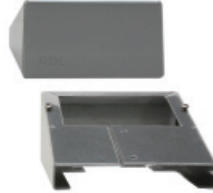
### EZ-SMB1

Surface Mount Bezel for 1/6 Rack Width Products



### EZ-DC1

Desktop Chassis 1/6 Rack Width



### EZ-UCB2

Under-Counter Brackets 1/6 or 1/3 Rack Width



### EZ-SD1

Storage Drawer 1/6 Rack Width

Use In Place of Filler Panel  
Holds Adapters and Cables  
Mounts in EZ-CC6 and EZ-RA6



## TYPICAL PERFORMANCE

|                              |                                                                                                                             |
|------------------------------|-----------------------------------------------------------------------------------------------------------------------------|
| Input:                       | Mic level, -60 to -30 dBu nominal                                                                                           |
| Input Impedance:             | >1 k $\Omega$ balanced                                                                                                      |
| Input / Output Connectors:   | XLR                                                                                                                         |
| LEVEL Adjustment:            | Single turn audio taper (front panel)                                                                                       |
| Minimum Input Level:         | -60 dBu (to cross compressor threshold) @ max gain; -30 dBu (to cross compressor threshold) @ min gain                      |
| Maximum Input Level:         | 0 dBu @ min gain                                                                                                            |
| Output:                      | Mic level, -55 dBu to -30 dBu, adjustable; NORMAL: -45 dBu                                                                  |
| Output Impedance:            | 150 $\Omega$ nominal, balanced                                                                                              |
| Output Level Adjustment:     | Single turn audio taper (rear panel)                                                                                        |
| Frequency Response:          | 50 Hz to 20 kHz (+/- 0.5 dB)                                                                                                |
| THD+N:                       | < 0.5% (50 Hz to 20 kHz, at compressor threshold)                                                                           |
| Compression:                 | 30 dB, automatic adjusting attack and release times                                                                         |
| Noise:                       | < -63 dB (below normal output level at comp. threshold, -56 dBu input)                                                      |
| CMRR:                        | > 55 dB (50 Hz to 120 Hz)                                                                                                   |
| Phantom:                     | 24 V (IEC 1938: 1996-12), present when phantom detected at module output                                                    |
| Indicators (3):              | Red LED: COMPRESSION, indicates compressor activity; Green LED: PHANTOM, indicates phantom voltage present; Blue LED: POWER |
| 24 Vdc power supply current: | 55 mA (idle), 60 mA (max.), 70 mA (max. with phantom)                                                                       |
| Power supply input voltage:  | 100 to 240 VAC                                                                                                              |
| Warranty:                    | 3 Years; contact RDL technical support department for assistance                                                            |
| Case dimensions:             | 2.9" (7.4 cm)W x 5" (12.7 cm)D                                                                                              |
| Mounting size:               | 1/6 rack width                                                                                                              |

CE

891-1645