

Excellent datas - direct PCB-mounting - extremely small - heavy MU-metal shield.

INPUT TRANSFORMER **NTM-4**

This input transformer is intended to match mic-lines to transistorised mic-input amplifiers. Center tap for phantom powering.

LINE TRANSFORMER **NTL-1**

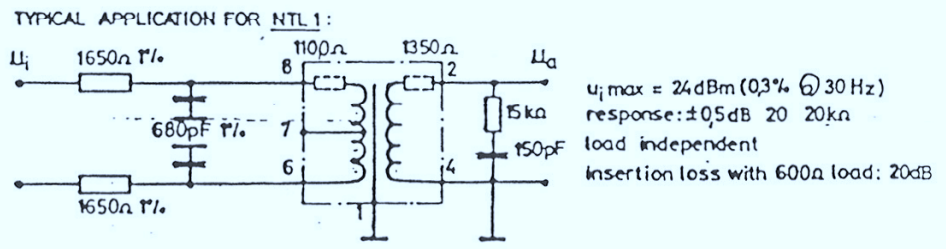
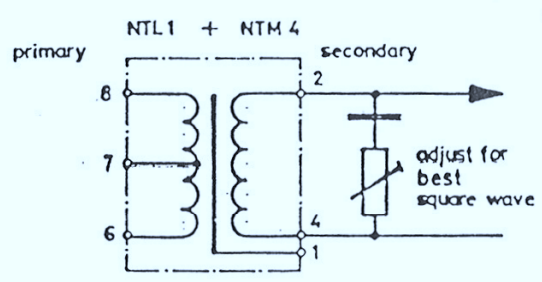
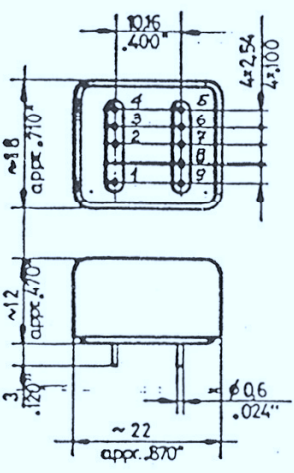
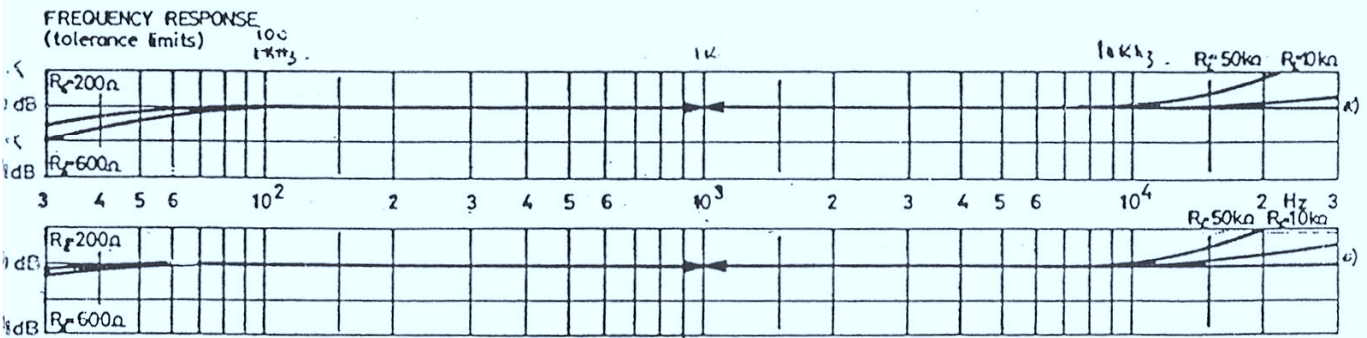
This line transformer is intended to balance amplifier outputs for line driving up to + 24 dBm (see also application note)

SPECIFICATIONS

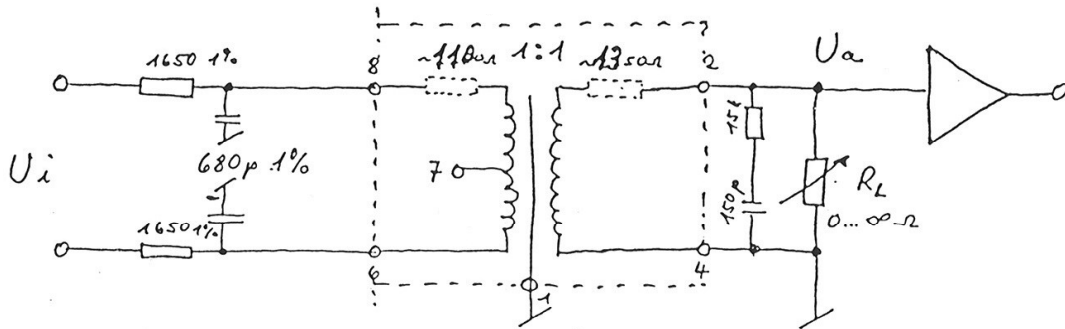
- Turns ratio 1 : 4 ± 10%
- primary winding resistance 105Ω ± 3%
- secondary winding resistance 1250Ω ± 5%
- input-voltage for THD ≤ 1%
at 30 Hz, source-resistance
600Ω :
- load-resistance 10 kΩ 800 mV
- load-resistance 50 kΩ 600 mV
- primary inductance at 30 Hz ≥ 8 Hy

SPECIFICATIONS

- Turns ratio 1 : 1 ± 5%
- primary winding resistance 1100Ω ± 5%
- secondary winding resistance 1350Ω ± 5%
- input-voltage for THD ≤ 1%
at 30 Hz, source-resistance
600Ω :
- load-resistance 600Ω 5,5 V
- load-resistance 2 kΩ 4,5 V
- primary inductance at 30 Hz ≥ 150 Hy



Typische Applikation NTL 1

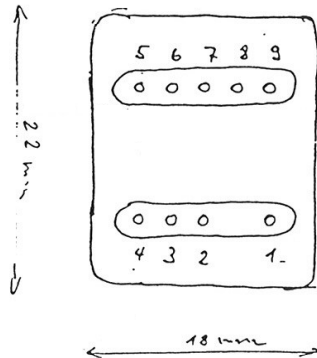


$$U_{i \max} = +24 \text{ dB (0.775)} \quad 1\% @ 40 \text{ Hz}$$

$$U_{a \max} = +14 \text{ dB (0.775)} \quad 1\% @ 40 \text{ Hz}$$

Frequenzgang: $\pm 0.5 \text{ dB}$. 20 Hz ... 15 kHz

$$Z_q \leq 1000 \Omega$$



Von unten

NTL 1

NEUTRIK AG