



## Technical Data Sheet

### LED SCRIPT LIGHTS

- 51-941** Canford Script Light, Led, 600mm, black, 50Hz
- 51-942** Canford Script Light, Led, 900mm, black, 50Hz
- 51-943** Canford Script Light, Led, 1200mm, black, 50Hz
- 51-944** Canford Script Light, Led, 600mm, white, 50Hz
- 51-945** Canford Script Light, Led, 900mm, white, 50Hz
- 51-946** Canford Script Light, Led, 1200mm, white, 50Hz
- 51-971** Canford Script Light, Led, 600mm, black, 50Hz, dimmable (DALI and switchDIM control)
- 51-972** Canford Script Light, Led, 900mm, black, 50Hz, dimmable (DALI and switchDIM control)
- 51-973** Canford Script Light, Led, 1200mm, black, 50Hz, dimmable (DALI and switchDIM control)
- 51-974** Canford Script Light, Led, 600mm, white, 50Hz, dimmable (DALI and switchDIM control)
- 51-975** Canford Script Light, Led, 900mm, white, 50Hz, dimmable (DALI and switchDIM control)
- 51-976** Canford Script Light, Led, 1200mm, white, 50Hz, dimmable (DALI and switchDIM control)

### DESCRIPTION

Canford script lights are constructed from elegant aluminium extrusions with fully adjustable shutters and are finished in a black eggshell stove enamel. They have integral electronic ballast. The colour temperature of the tubes is approximately 5500 K.

The cases are available in three sizes, to take LED tubes:

600mm      10 watt

900mm      12 watt

1200mm    20 watt

Spare lamps are also available to special order.

Units are available in two different versions, dimmable and non-dimmable.

The dimmable script lights can be controlled either digitally by DALI/DSI control or by switchDIM.

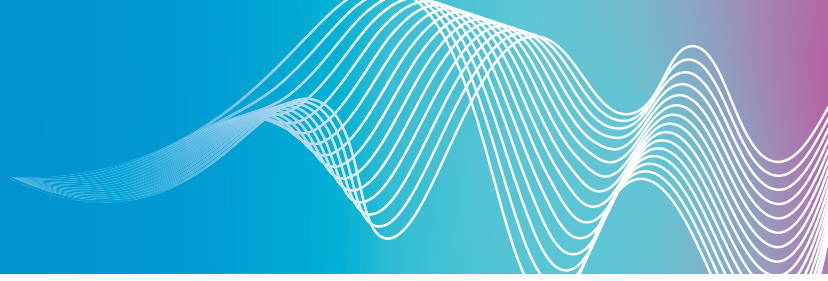
DALI/DSI allows the script light to be individually addressed and operated by commercial lighting control software (not supplied), allowing predefined levels, timed control etc.

Operation via switchDIM requires the direct connection of a suitably rated push to make switch for dimming and switching. A brief push (<0.6s) will switch the ballast ON and OFF, when pushed continually the ballast will either dim or brighten.

At switch ON the ballast will return to the previous level prior to switch OFF.

More than one script light can be controlled simultaneously and can be synchronised to 50% by a single 10s push of the switch.

**Note:** push switches with indicator lamps cannot be used.



## INSTALLATION INSTRUCTIONS

The installation should be carried out by appropriately qualified staff.

TURN ELECTRICITY SUPPLY OFF AT MAINS BEFORE INSTALLING OR MAINTAINING THIS LUMINAIRE.

Following unpacking and inspection for damage in transit, the lamp should be removed by easing back one of the lamp holders until the pins become visible and then lifting out of the lamp holder fittings.

Shutter adjustment screws on either end of the script light would need to be loosened to allow lamp holders to be eased back.

External wiring should be connected through the rubber grommet to the terminal block.

### WARNING - THIS EQUIPMENT MUST BE EARTHED.

Connect **Live** wire to the terminal marked 'L'

Connect **Neutral** wire to the terminal marked 'N'

Connect **Earth** wire to the terminal marked 'E'

(**Note:** Uninsulated protective earth wires should be sleeved with green/yellow insulating sleeve).

DALI control and switchDIM dimmable script lights provide + and – terminals for suitable controllers, (not supplied). Follow controller instructions with respect to appropriate installation.

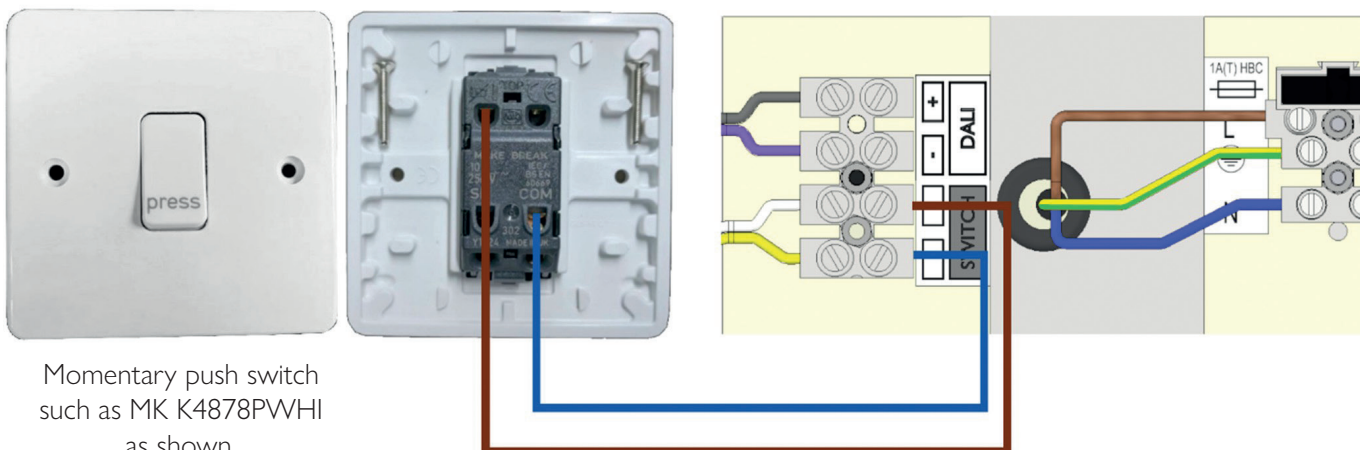
### NOTE

In the UK the completed installation must comply with "Regulations for electrical installations", current edition, as published by the Institution of Electrical Engineers.

### MAINTENANCE

Ensure that a copy of these instructions is presented to the responsible authority for maintenance.

**CAUTION: WIRE THIS UNIT AS INSTRUCTED BELOW, FAILURE TO DO SO MAY VOID WARRANTY.**



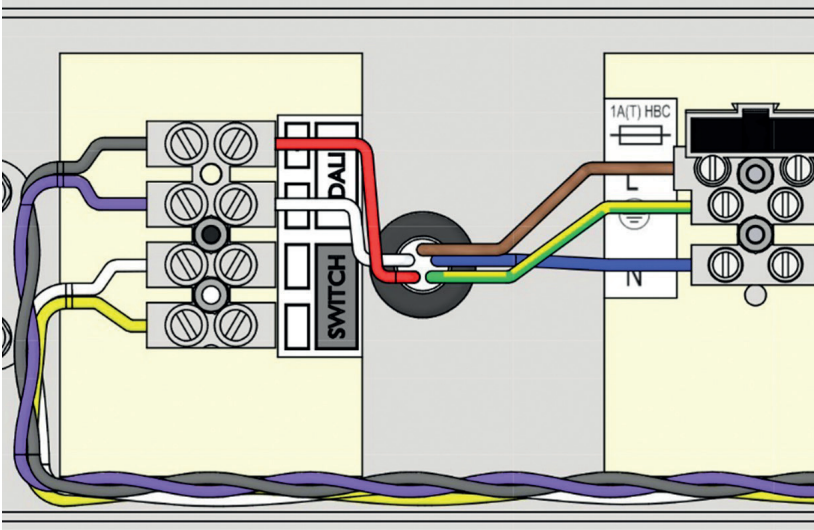
## FOR SWITCHDIM CONTROL

### Standard UK Mains Colours (for reference):

- Live: Brown
- Neutral: Blue
- Earth: Green & Yellow

### Switch Wire Colours:

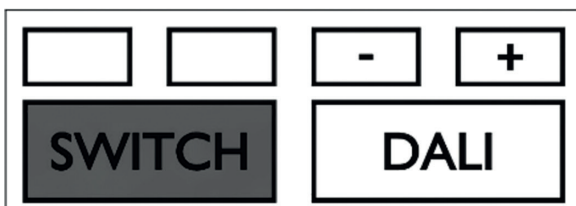
- Positive: Brown
- Negative: Blue



## FOR DALI CONTROL

### Mains + DALI (5-Core Example: FS Cables: 3180100504DL-C16, 5 core 1mm):

- Brown: Live (L)
- Blue: Neutral (N)
- Green/Yellow: Earth (PE)
- Red: DALI + (Data Positive)
- White: DALI - (Data Negative)





## TECHNICAL SPECIFICATION

**EQUIPMENT TYPE** - Fixed class Luminaire, for wall mounted, internal use.

<b>Conforming Standards:</b>	BS4533 Luminaires. BS EN 60065 Specification of safety requirements for mains operated electronic and related equipment approved for household and similar general use. BS EN 60598-1 Luminaires, general requirements and testing.
<b>EC Compliance:</b>	EMC Directive 89/336/EEC Low Voltage Directives 73/23/EEC 93/68/EEC
<b>Rated Voltage:</b>	220/240V 50/60Hz
<b>Rated Wattage:</b>	600mm Types 10 Watts 900mm types 12 Watts 1200mm types 20 Watts
<b>Dimensions:</b> (with knobs fitted)	600mm type 725 x 100 x 90mm (L x W x H) 900mm type 1025 x 100 x 90mm (L x W x H) 1200mm type 1325 x 100 x 90mm (L x W x H)