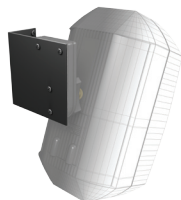




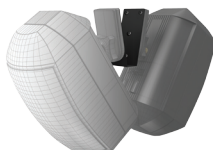
Safety first ! Use adequate and sufficiently sturdy mounting screws, wall plugs and/or additional support accessories to ensure safe installation.

MASKLW - MASKLBL



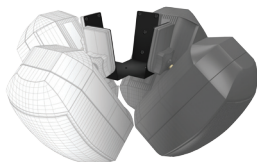
MASK L-bracket has been designed to mount MASK series speakers with intelli-mount at an angle of 90° from the wall.

MASKVW - MASKVBL



MASK V-bracket has been designed to mount 2 pieces of MASK series speakers of the same size and weight with intelli-mount from the ceiling at a 180° angle from each other.

MASKWW - MASKWBL



MASK W-bracket has been designed to mount 4 pieces of MASK series speakers of the same size and weight with intelli-mount from the ceiling at a 90° angle from each other.

SAFETY INSTRUCTIONS:

Please follow the safety instructions in this manual to obtain optimum results before use.
We also recommend to keep this instruction manual for future reference.

Install the unit only in a location that can structurally support the weight of the speaker unit(s) and mounting bracket(s).
Doing otherwise may result in the unit(s) falling down, causing personal injury and/or property damage. Do not stand or sit on, nor hang down from the mounted speaker(s) as this may cause them to fall down or drop, resulting in personal injury and/or property damage.

These brackets are designed for indoor use only. Do not use outdoors.
Make sure that each screw is well tightened after installation.

Audioprof takes no responsibility for any accidents or injuries caused by wrong installation. If necessary secure the speakers with additional safety cables, such as our SAF CAB range of safety cables.