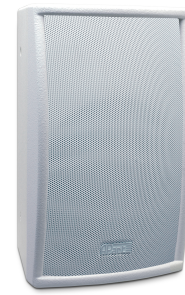


MASK8F-W

8" two-way full range loudspeaker,
white



The Apart MASK8F is a robust 8" two-way full range low impedance loudspeaker with timeless design suited for background music up to 'dance level' music. This wooden cabinet loudspeaker is especially designed to produce a full hi-fi sound at a higher power level without using a subwoofer.

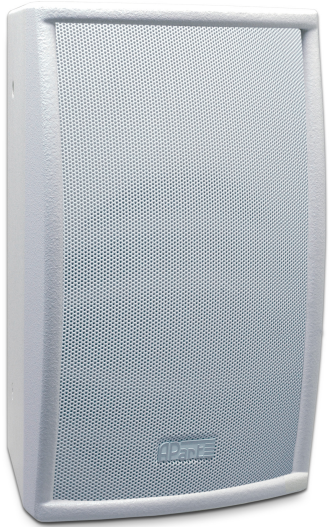
MASK8F has a very powerful 8" coated paper cone woofer. Together with the Ferro-fluid cooled silk dome tweeter on a Waveguide horn, this results in a high SPL, an ultra low distortion and a sound that comes close to studio monitor quality. The built-in Auto-Reset 2-step Protection Guard together with the quality components makes MASK8F a fail-safe loudspeaker, even at high power loads! After mounting the bracket on the wall, the sleeve in the bracket makes it quite easy and safe to fix the MASK8F loudspeakers, even in uncomfortable positions.

The cabinet has several thread mounting points tapped at the back, the top and side of the cabinet. This way the cabinet can be rigged or mounting clamps can be used. An extra contractor advantage! MASK8F also has a pole mount adapter in its bottom. This adapter makes it possible to mount the speaker on top of a standard 35mm pole such as the Apart STFLOOR, STSUB and STT. MASK8F is delivered with a metal U-Mounting bracket.

TECHNICAL SPECIFICATIONS

| | | | |
|--------------------------------------|---------------|-------------------------------------|-----------|
| height in mm | 411 | width in mm | 250 |
| depth in mm | 250 | loudspeaker system | 2-way |
| woofer size in inch | 8 | woofer cone material | paper |
| tweeter size in inch | 1 | mounting system | U-bracket |
| colour | black / white | impedance in ohms | 8 |
| low impedance dynamic power in watts | 300 | SPL 1W/1m in dB | 90 |
| max SPL 1m in dB | 112 | frequency response in Hz | 50 - 25K |
| main construction material | mdf wood | grille main material | steel |
| IP rating | 40 | applicable low impedance | Yes |
| applicable in 100V | No | Horizontal dispersion angle 1000 Hz | 150° |
| Vertical dispersion angle 1000 Hz | 160° | | |

MORE PICTURES



ACCESSORIES



STT

T-adaptor for 2 MASK8 on one pole



STSUB

Pole stand for MASK8 onto Sub with pole adapter



STFLOOR

Floorstand for speaker with pole adapter