

## E-VOLST

Stereo, 2 x 20 watts Euro volume control, white



The Apart E-VOLST is a 4 ohms, low impedance stereo volume control that can handle up to 2 x 40 watts of power. It is very versatile thanks to the step-by-step attenuation in 6 steps.

The E-VOLST is built on a universal chassis that easily can be integrated with Gira, Jung and Euro.

It can only be used with E-MODON as a surface mounted volume control.

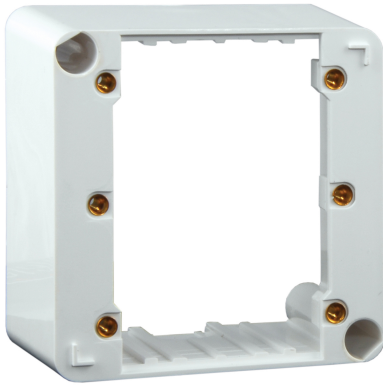
### TECHNICAL SPECIFICATIONS

|                                 |                  |                                     |            |
|---------------------------------|------------------|-------------------------------------|------------|
| <b>stereo/mono</b>              | stereo           | <b>impedance in ohms</b>            | 4 - 8 - 16 |
| <b>applicable low impedance</b> | Yes              | <b>applicable 100V</b>              | No         |
| <b>max. power in watts</b>      | 2 x 40           | <b>steps</b>                        | 10         |
| <b>24 volt priority relais</b>  | No               | <b>mounting</b>                     | screw      |
| <b>connector type</b>           | euroblock 8-pole | <b>max. cable in mm<sup>2</sup></b> | 2.5        |
| <b>width in mm</b>              | 80               | <b>height in mm</b>                 | 80         |
| <b>depth in mm</b>              | 60               | <b>weight in gr</b>                 | 270        |

MORE PICTURES



## ACCESSORIES



### **E-MODON**

Built-on box for wall controls